



PoleStar

NATIONAL ALLERGY REFERRAL LABORATORY

TEST MENU



Setting
Directions

POLESTAR CLINICAL LABORATORIES



Setting
Directions



PoleStar is a national allergy referral laboratory equipped with a plethora of technological platforms and a highly competent team of allergy experts utilizing the appropriate diagnostic test in order to guide the treatment and management strategy.

PoleStar is working towards creating a paradigm shift in the field of allergy diagnostics and setting a new standard/frame of reference. This paradigm shift will be a result of the allergens utilized, the technological platforms integrated, the collaboration with leading experts in the field of allergy, the transformation of the current day reporting standards, the technical assistance provided etc.

PoleStar, a centre of excellence in *in-vitro* allergy diagnostics is revolutionizing the domain due to its multi-pronged approach. By associating with global companies, universities, researchers and blending their knowledge with PoleStar's own manufacturing and protein purification setup, PoleStar is positioned to effectively meet the demands of the Indian market.



Index		Page No.
Specimen Details		1
E1 s-IgE	AllerProfile AllerProfile is a comprehensive screening test that provides a holistic insight into a patient's allergic status by creating a sensitization profile. It includes the specific IgE against molecular components and purified extracts.	2
E2 s-IgE	AllerPanel AllerPanel has been designed to cater to the common allergens causing sensitization. The comprehensive panels of multiple allergens enable to "scan" the common allergens that triggers allergic manifestations.	10
E3 s-IgE	AllerCluster AllerCluster is a state-of-the-art test that has been developed to investigate sensitization to dust mites by utilizing both molecular components and characterized purified extracts.	16
E4 s-IgE	AllerMix AllerMix has been designed for rapid analysis of different allergenic groups to provide an insight into overall sensitization by utilizing a mix of different allergenic sources in one test.	17
E5 s-IgE	AllerOne AllerOne test enables efficient quantitative testing of individual allergens. It helps to pinpoint and identify the offending allergen and also to monitor the immunotherapeutic procedure.	19
G1 s-IgG/ s-IgG4	FoodProfile FoodProfile is a multiplex based food intolerance test that allows for the simultaneous measurement of specific IgG (sIgG) against a plethora of molecular food antigens and purified extracts.	24

Specimen Details



Specimen Type

Serum

Collection Container

Yellow top serum-separator tube (SST)

Quantity

Minimum 2 - 3 ml of separated serum

Nature Of Specimen

- The sample should not be hemolyzed, icteric and lipemic
- The specimen should be free from clots

Fasting

Fasting is not required (sample should not be lipemic)

AllerProfile

Complete Allergy Profile	Test Code: ALEX-2
Complete Allergy Profile (With Total IgE)	Test Code: ALEX-2-TE

Sr. No.	Allergen	Category
1	Acacia (<i>Acacia mimosa</i>)	PEC
2	Acarus siro (<i>Acarus siro</i>)	PEC
3	Alder (<i>Alnus glutinosa</i>)	Aln g 1 (Mol.)
4	Alder (<i>Alnus glutinosa</i>)	Aln g 4 (Mol.)
5	Almond (<i>Prunus dulcis</i>)	PEC
6	Alternaria alternata (<i>Alternaria alternata</i>)	Alt a 1 (Mol.)
7	Alternaria alternata (<i>Alternaria alternata</i>)	Alt a 6 (Mol.)
8	Anisakis simplex (<i>Anisakis simplex</i>)	Ani s 1 (Mol.)
9	Anisakis simplex (<i>Anisakis simplex</i>)	Ani s 3 (Mol.)
10	Anise (<i>Pimpinella anisum</i>)	PEC
11	Annual Mercury (<i>Mercurialis annua</i>)	Mer a 1 (Mol.)
12	Apple (<i>Malus domestica</i>)	Mal d 1 (Mol.)
13	Apple (<i>Malus domestica</i>)	Mal d 2 (Mol.)
14	Apple (<i>Malus domestica</i>)	Mal d 3 (Mol.)
15	Arizona cypress (<i>Cupressus arizonica</i>)	Cup a 1 (Mol.)
16	Ash (<i>Fraxinus excelsior</i>)	PEC
17	Ash (<i>Fraxinus excelsior</i>)	Fra e 1
18	Aspergillus fumigatus (<i>Aspergillus fumigatus</i>)	Asp f 1 (Mol.)
19	Aspergillus fumigatus (<i>Aspergillus fumigatus</i>)	Asp f 3 (Mol.)
20	Aspergillus fumigatus (<i>Aspergillus fumigatus</i>)	Asp f 4 (Mol.)
21	Aspergillus fumigatus (<i>Aspergillus fumigatus</i>)	Asp f 6 (Mol.)
22	Atlantic cod (<i>Gadus morhua</i>)	PEC
23	Atlantic cod (<i>Gadus morhua</i>)	Gad m 1 (Mol.)
24	Atlantic cod (<i>Gadus morhua</i>)	Gad m 2 & Gad m 3
25	Atlantic herring (<i>Clupea harengus</i>)	PEC
26	Atlantic herring (<i>Clupea harengus</i>)	Clu h 1 (Mol.)
27	Atlantic mackerel (<i>Scomber scombrus</i>)	PEC
28	Atlantic mackerel (<i>Scomber scombrus</i>)	Sco s 1 (Mol.)
29	Avocado (<i>Persea americana</i>)	PEC
30	Bahia grass (<i>Paspalum notatum</i>)	PEC
31	Baker's yeast (<i>Saccharomyces cerevisiae</i>)	PEC
32	Banana (<i>Musa acuminata</i>)	PEC
33	Barley (<i>Hordeum vulgare</i>)	PEC
34	Beech (<i>Fagus sylvatica</i>)	Fag s 1 (Mol.)
35	Beef (<i>Bos domesticus</i>)	PEC
36	Beef (<i>Bos domesticus</i>)	Bos d 6 (Mol.)
37	Bermuda grass (<i>Cynodon dactylon</i>)	PEC
38	Bermuda grass (<i>Cynodon dactylon</i>)	Cyn d 1 (Mol.)
39	Black-Tiger shrimp (<i>Penaeus monodon</i>)	Pen m 1 (Mol.)

Mol.: Molecular Component

PEC: Purified Extract And Characterized

AllerProfile

Complete Allergy Profile	Test Code: ALEX-2
Complete Allergy Profile (With Total IgE)	Test Code: ALEX-2-TE

Sr. No.	Allergen	Category
40	Black-Tiger shrimp (<i>Penaeus monodon</i>)	Pen m 2 (Mol.)
41	Black-Tiger shrimp (<i>Penaeus monodon</i>)	Pen m 3 (Mol.)
42	Black-Tiger shrimp (<i>Penaeus monodon</i>)	Pen m 4 (Mol.)
43	Blomia tropicalis (<i>Blomia tropicalis</i>)	Blo t 5 (Mol.)
44	Blomia tropicalis (<i>Blomia tropicalis</i>)	Blo t 10 (Mol.)
45	Blomia tropicalis (<i>Blomia tropicalis</i>)	Blo t 21 (Mol.)
46	Blueberry (<i>Vaccinium myrtillus</i>)	PEC
47	Brazil nut (<i>Bertholletia excelsa</i>)	PEC
48	Brazil nut (<i>Bertholletia excelsa</i>)	Ber e 1
49	Brown shrimp (<i>Crangon crangon</i>)	Cra c 6 (Mol.)
50	Buckwheat (<i>Fagopyrum esculentum</i>)	PEC
51	Buckwheat (<i>Fagopyrum esculentum</i>)	Fag e 2 (Mol.)
52	Camel's milk (<i>Camelus dromedarius</i>)	PEC
53	Caraway (<i>Carum carvi</i>)	PEC
54	Carp (<i>Cyprinus carpio</i>)	Cyp c 1 (Mol.)
55	Carrot (<i>Daucus carota</i>)	PEC
56	Carrot (<i>Daucus carota</i>)	Dau c 1 (Mol.)
57	Cashew (<i>Anacardium occidentale</i>)	PEC
58	Cashew (<i>Anacardium occidentale</i>)	Ana o 2
59	Cashew (<i>Anacardium occidentale</i>)	Ana o 3
60	Cat epithelia (<i>Felis domesticus</i>)	Fel d 1 (Mol.)
61	Cat epithelia (<i>Felis domesticus</i>)	Fel d 2 (Mol.)
62	Cat epithelia (<i>Felis domesticus</i>)	Fel d 4 (Mol.)
63	Cat epithelia (<i>Felis domesticus</i>)	Fel d 7 (Mol.)
64	Cattle epithelia (<i>Bos domesticus</i>)	Bos d 2 (Mol.)
65	Celery (<i>Apium graveolens</i>)	Api g 1 (Mol.)
66	Celery (<i>Apium graveolens</i>)	Api g 2 (Mol.)
67	Celery (<i>Apium graveolens</i>)	Api g 6 (Mol.)
68	Cherry (<i>Prunus spp.</i>)	PEC
69	Chicken (<i>Gallus domesticus</i>)	PEC
70	Chickpea (<i>Cicer arietinus</i>)	PEC
71	Cladosporium herbarum (<i>Cladosporium herbarum</i>)	PEC
72	Cladosporium herbarum (<i>Cladosporium herbarum</i>)	Cla h 8 (Mol.)
73	Cockroach (<i>Blatella germanica</i>)	Bla g 1 (Mol.)
74	Cockroach (<i>Blatella germanica</i>)	Bla g 2 (Mol.)
75	Cockroach (<i>Blatella germanica</i>)	Bla g 4 (Mol.)
76	Cockroach (<i>Blatella germanica</i>)	Bla g 5 (Mol.)
77	Cockroach (<i>Blatella germanica</i>)	Bla g 9 (Mol.)
78	Cockroach (<i>Periplaneta americana</i>)	PEC

Mol.: Molecular Component

PEC: Purified Extract And Characterized

AllerProfile

Complete Allergy Profile	Test Code: ALEX-2
Complete Allergy Profile (With Total IgE)	Test Code: ALEX-2-TE

Sr. No.	Allergen	Category
79	Cockroach (<i>Periplaneta americana</i>)	Per a 7 (Mol.)
80	Common mussel (<i>Mytilus edulis</i>)	PEC
81	Common reed (<i>Phragmites communis</i>)	PEC
82	Common wasp venom (<i>Vespula vulgaris</i>)	PEC
83	Common wasp venom (<i>Vespula vulgaris</i>)	Ves v 1 (Mol.)
84	Common wasp venom (<i>Vespula vulgaris</i>)	Ves v 5 (Mol.)
85	Corn, cereal (<i>Zea mays</i>)	PEC
86	Corn, cereal (<i>Zea mays</i>)	Zea m 14 (Mol.)
87	Cottonwood (<i>Populus nigra</i>)	PEC
88	Cow's milk (<i>Bos domesticus</i>)	PEC
89	Cow's milk (<i>Bos domesticus</i>)	Bos d 4 (Mol.)
90	Cow's milk (<i>Bos domesticus</i>)	Bos d 5 (Mol.)
91	Cow's milk (<i>Bos domesticus</i>)	Bos d 8 (Mol.)
92	Crab (<i>Chionoecetes spp.</i>)	PEC
93	Cultivated rye (<i>Secale cereale</i>)	PEC
94	Cypress (<i>Cupressus sempervirens</i>)	PEC
95	Date Palm (<i>Phoenix dactylifera</i>)	Pho d 2 (Mol.)
96	Djungarian hamster (<i>Phodopus sungorus</i>)	Phod s 1 (Mol.)
97	Dog epithelia (<i>Canis familiaris</i>)	Can f 1 (Mol.)
98	Dog epithelia (<i>Canis familiaris</i>)	Can f 2 (Mol.)
99	Dog epithelia (<i>Canis familiaris</i>)	Can f 3 (Mol.)
100	Dog epithelia (<i>Canis familiaris</i>)	Can f 4 (Mol.)
101	Dog epithelia (<i>Canis familiaris</i>)	Can f 6 (Mol.)
102	Dog epithelia (<i>Canis familiaris</i>)	Can f Fel d 1 like (Mol.)
103	Dog male urine - Including Can f 5 (<i>Canis familiaris</i>)	PEC
104	Egg white (<i>Gallus domesticus</i>)	PEC
105	Egg white (<i>Gallus domesticus</i>)	Gal d 1 (Mol.)
106	Egg white (<i>Gallus domesticus</i>)	Gal d 2 (Mol.)
107	Egg white (<i>Gallus domesticus</i>)	Gal d 3 (Mol.)
108	Egg white (<i>Gallus domesticus</i>)	Gal d 4 (Mol.)
109	Egg yolk (<i>Gallus domesticus</i>)	PEC
110	Egg yolk (<i>Gallus domesticus</i>)	Gal d 5 (Mol.)
111	Elm (<i>Ulmus campestris</i>)	PEC
112	Fenugreek seeds (<i>Trigonella foenum-graecum</i>)	PEC
113	Fig (<i>Ficus carica</i>)	PEC
114	Fire ant venom (<i>Solenopsis richteri</i> & <i>Solenopsis invicta</i>)	PEC
115	Garlic (<i>Allium sativum</i>)	PEC
116	Glycyphagus domesticus (<i>Glycyphagus domesticus</i>)	Gly d 2 (Mol.)
117	Goat (<i>Capra hircus</i>)	PEC

Mol.: Molecular Component

PEC: Purified Extract And Characterized

AllerProfile

Complete Allergy Profile	Test Code: ALEX-2
Complete Allergy Profile (With Total IgE)	Test Code: ALEX-2-TE

Sr. No.	Allergen	Category
118	Goat's milk (<i>Capra hircus</i>)	PEC
119	Grape (<i>Vitis vinifera</i>)	Vit v 1 (Mol.)
120	Green bean (<i>Phaseolus vulgaris</i>)	PEC
121	Guinea Pig (<i>Cavia porcellus</i>)	Cav p 1 (Mol.)
122	Hazel tree pollen (<i>Corylus avellana</i>)	PEC
123	Hazel tree pollen (<i>Corylus avellana</i>)	Cor a 1.0103 (Mol.)
124	Hazelnut (<i>Corylus avellana</i>)	Cor a 1.0401 (Mol.)
125	Hazelnut (<i>Corylus avellana</i>)	Cor a 8 (Mol.)
126	Hazelnut (<i>Corylus avellana</i>)	Cor a 9 (Mol.)
127	Hazelnut (<i>Corylus avellana</i>)	Cor a 11 (Mol.)
128	Hazelnut (<i>Corylus avellana</i>)	Cor a 14 (Mol.)
129	Hemp (CBD) (<i>Cannabis sativa</i>)	PEC
130	Hemp (<i>Cannabis sativa</i>)	Can s 3 (Mol.)
131	Hom s lactoferrin	Hom s LF
132	Honey bee venom (<i>Apis mellifera</i>)	PEC
133	Honey bee venom (<i>Apis mellifera</i>)	Api m 1 (Mol.)
134	Honey bee venom (<i>Apis mellifera</i>)	Api m 10 (Mol.)
135	Horse epithelia (<i>Equus caballus</i>)	Equ c 1 (Mol.)
136	Horse epithelia (<i>Equus caballus</i>)	Equ c 3 (Mol.)
137	Horse epithelia (<i>Equus caballus</i>)	Equ c 4 (Mol.)
138	Horse meat (<i>Equus caballus</i>)	PEC
139	House Cricket (<i>Acheta domesticus</i>)	PEC
140	House dust mite (<i>Dermatophagoides pteronyssinus</i>)	Der p 1 (Mol.)
141	House dust mite (<i>Dermatophagoides pteronyssinus</i>)	Der p 2 (Mol.)
142	House dust mite (<i>Dermatophagoides pteronyssinus</i>)	Der p 5 (Mol.)
143	House dust mite (<i>Dermatophagoides pteronyssinus</i>)	Der p 7 (Mol.)
144	House dust mite (<i>Dermatophagoides pteronyssinus</i>)	Der p 10 (Mol.)
145	House dust mite (<i>Dermatophagoides pteronyssinus</i>)	Der p 11 (Mol.)
146	House dust mite (<i>Dermatophagoides pteronyssinus</i>)	Der p 20 (Mol.)
147	House dust mite (<i>Dermatophagoides pteronyssinus</i>)	Der p 21 (Mol.)
148	House dust mite (<i>Dermatophagoides pteronyssinus</i>)	Der p 23 (Mol.)
149	House dust mite (<i>Dermatophagoides farinae</i>)	Der f 1 (Mol.)
150	House dust mite (<i>Dermatophagoides farinae</i>)	Der f 2 (Mol.)
151	Kiwi (<i>Actinidia deliciosa</i>)	Act d 1 (Mol.)
152	Kiwi (<i>Actinidia deliciosa</i>)	Act d 2 (Mol.)
153	Kiwi (<i>Actinidia deliciosa</i>)	Act d 5 (Mol.)
154	Kiwi (<i>Actinidia deliciosa</i>)	Act d 10 (Mol.)
155	Lamb (<i>Ovis aries</i>)	PEC
156	Lambs quarter (<i>Chenopodium album</i>)	PEC

Mol.: Molecular Component

PEC: Purified Extract And Characterized

AllerProfile

Complete Allergy Profile	Test Code: ALEX-2
Complete Allergy Profile (With Total IgE)	Test Code: ALEX-2-TE

Sr. No.	Allergen	Category
157	Lambs quarter (<i>Chenopodium album</i>)	Che a 1 (Mol.)
158	Latex (<i>Hevea brasiliensis</i>)	Hev b 1 (Mol.)
159	Latex (<i>Hevea brasiliensis</i>)	Hev b 3 (Mol.)
160	Latex (<i>Hevea brasiliensis</i>)	Hev b 5 (Mol.)
161	Latex (<i>Hevea brasiliensis</i>)	Hev b 6.02 (Mol.)
162	Latex (<i>Hevea brasiliensis</i>)	Hev b 8 (Mol.)
163	Latex (<i>Hevea brasiliensis</i>)	Hev b 11 (Mol.)
164	Lentil (<i>Lens culinaris</i>)	PEC
165	Lepidoglyphus destructor (<i>Lepidoglyphus destructor</i>)	Lep d 2 (Mol.)
166	Lobster (<i>Homarus gammarus</i>)	PEC
167	London plane tree (<i>Platanus acerifolia</i>)	Pla a 1 (Mol.)
168	London plane tree (<i>Platanus acerifolia</i>)	Pla a 2 (Mol.)
169	London plane tree (<i>Platanus acerifolia</i>)	Pla a 3 (Mol.)
170	Long-headed wasp venom (<i>Dolichovespula spp.</i>)	PEC
171	Lupine seed (<i>Lupinus albus</i>)	PEC
172	Macadamia (<i>Macadamia integrifolia</i>)	PEC
173	Macadamia (<i>Macadamia integrifolia</i>)	Mac i2S albumin
174	Malassezia sympodialis (<i>Malassezia sympodialis</i>)	Mala s 5 (Mol.)
175	Malassezia sympodialis (<i>Malassezia sympodialis</i>)	Mala s 6 (Mol.)
176	Malassezia sympodialis (<i>Malassezia sympodialis</i>)	Mala s 11 (Mol.)
177	Mango (<i>Mangifera indica</i>)	PEC
178	Mare's milk (<i>Equus caballus</i>)	PEC
179	Mealworm (<i>Tenebrio molitor</i>)	PEC
180	Migratory Locust (<i>Locusta migratoria</i>)	PEC
181	Millet (<i>Panicum miliaceum</i>)	PEC
182	Mountain cedar (<i>Juniperus ashei</i>)	PEC
183	Mouse (<i>Mus musculus</i>)	Mus m 1 (Mol.)
184	Mugwort (<i>Artemisia vulgaris</i>)	PEC
185	Mugwort (<i>Artemisia vulgaris</i>)	Art v 1.0101 (Mol.)
186	Mugwort (<i>Artemisia vulgaris</i>)	Art v 3.0201 (Mol.)
187	Mulberry tree (<i>Morus rubra</i>)	PEC
188	Muskmelon (<i>Cucumis melo</i>)	Cuc m 2 (Mol.)
189	Mustard (<i>Brassica / Sinapis spp.</i>)	PEC
190	Mustard (<i>Brassica / Sinapis spp.</i>)	Sin a 1 (Mol.)
191	Nettle (<i>Urtica dioica</i>)	PEC
192	Northern prawn (<i>Pandalus borealis</i>)	PEC
193	Oat (<i>Avena sativa</i>)	PEC
194	Olive (<i>Olea Europaea</i>)	Ole e 1 (Mol.)
195	Olive (<i>Olea Europaea</i>)	Ole e 9 (Mol.)

Mol.: Molecular Component

PEC: Purified Extract And Characterized

AllerProfile

Complete Allergy Profile	Test Code: ALEX-2
Complete Allergy Profile (With Total IgE)	Test Code: ALEX-2-TE

Sr. No.	Allergen	Category
196	Onion (<i>Allium cepa</i>)	PEC
197	Orange (<i>Citrus sinensis</i>)	PEC
198	Oregano (<i>Origanum vulgare</i>)	PEC
199	Oyster (<i>Ostrea edulis</i>)	PEC
200	Papaya (<i>Carica papaya</i>)	PEC
201	Paper mulberry (<i>Broussonetia papyrifera</i>)	PEC
202	Paper wasp venom (<i>Polistes dominulus</i>)	PEC
203	Paper wasp venom (<i>Polistes dominulus</i>)	Pol d 5 (Mol.)
204	Paprika (<i>Capsicum annum</i>)	PEC
205	Parsley (<i>Petroselinum crispum</i>)	PEC
206	Pea (<i>Pisum sativum</i>)	PEC
207	Peach (<i>Prunus persica</i>)	Pru p 3 (Mol.)
208	Peanut (<i>Arachis hypogaea</i>)	Ara h 1 (Mol.)
209	Peanut (<i>Arachis hypogaea</i>)	Ara h 2 (Mol.)
210	Peanut (<i>Arachis hypogaea</i>)	Ara h 3 (Mol.)
211	Peanut (<i>Arachis hypogaea</i>)	Ara h 6 (Mol.)
212	Peanut (<i>Arachis hypogaea</i>)	Ara h 8 (Mol.)
213	Peanut (<i>Arachis hypogaea</i>)	Ara h 9 (Mol.)
214	Peanut (<i>Arachis hypogaea</i>)	Ara h 15 (Mol.)
215	Pear (<i>Pyrus communis</i>)	PEC
216	Pecan (<i>Carya illinoensis</i>)	PEC
217	Penicillium chrysogenum (<i>Penicillium chrysogenum</i>)	PEC
218	Perennial ryegrass (<i>Lolium perenne</i>)	Lol p 1 (Mol.)
219	Pig epithelia (<i>Sus domesticus</i>)	PEC
220	Pig meat (<i>Sus domesticus</i>)	PEC
221	Pig meat (<i>Sus domesticus</i>)	Sus d 1 (Mol.)
222	Pigeon tick (<i>Argas reflexus</i>)	Arg r 1 (Mol.)
223	Pigweed (<i>Amaranthus retroflexus</i>)	PEC
224	Pistachio (<i>Pistacia vera</i>)	Pis v 1 (Mol.)
225	Pistachio (<i>Pistacia vera</i>)	Pis v 2 (Mol.)
226	Pistachio (<i>Pistacia vera</i>)	Pis v 3 (Mol.)
227	Poppy seed (<i>Papaver somniferum</i>)	PEC
228	Poppy seed (<i>Papaver somniferum</i>)	Pap s 2S albumin (Mol.)
229	Potato (<i>Solanum tuberosum</i>)	PEC
230	Pumpkin seed (<i>Cucurbita pepo</i>)	PEC
231	Quinoa (<i>Chenopodium quinoa</i>)	PEC
232	Rabbit dander epithelia (<i>Oryctolagus cuniculus</i>)	Ory c 1 (Mol.)
233	Rabbit dander epithelia (<i>Oryctolagus cuniculus</i>)	Ory c 2 (Mol.)
234	Rabbit dander epithelia (<i>Oryctolagus cuniculus</i>)	Ory c 3 (Mol.)

Mol.: Molecular Component

PEC: Purified Extract And Characterized

AllerProfile

Complete Allergy Profile	Test Code: ALEX-2
Complete Allergy Profile (With Total IgE)	Test Code: ALEX-2-TE

Sr. No.	Allergen	Category
235	Rabbit meat (<i>Oryctolagus spp.</i>)	PEC
236	Ragweed (<i>Ambrosia artemisiifolia</i>)	PEC
237	Ragweed (<i>Ambrosia artemisiifolia</i>)	Amb a 1 (Mol.)
238	Ragweed (<i>Ambrosia artemisiifolia</i>)	Amb a 4 (Mol.)
239	Rat epithelia (<i>Rattus norvegicus</i>)	PEC
240	Ribwort (<i>Plantago lanceolata</i>)	PEC
241	Ribwort (<i>Plantago lanceolata</i>)	Pla l 1 (Mol.)
242	Rice (<i>Oryza sativa</i>)	PEC
243	Russian thistle (<i>Salsola kali</i>)	PEC
244	Russian thistle (<i>Salsola kali</i>)	Sal k 1 (Mol.)
245	Rye (<i>Secale cereale</i>)	PEC
246	Salmon (<i>Salmo salar</i>)	PEC
247	Salmon (<i>Salmo salar</i>)	Sal s 1 (Mol.)
248	Scallop (<i>Pecten spp.</i>)	PEC
249	Sesame (<i>Sesamum indicum</i>)	PEC
250	Sesame (<i>Sesamum indicum</i>)	Ses i 1 (Mol.)
251	Sheep epithelia (<i>Ovis aries</i>)	PEC
252	Sheep's milk (<i>Ovis aries</i>)	PEC
253	Shrimp mix (<i>Litopaenaes setiferus, Farfantepenaes aztecus, Farfantepenaes dourarum</i>)	PEC
254	Silver birch (<i>Betula verrucosa</i>)	Bet v 1 (Mol.)
255	Silver birch (<i>Betula verrucosa</i>)	Bet v 2 (Mol.)
256	Silver birch (<i>Betula verrucosa</i>)	Bet v 6 (Mol.)
257	Soy (<i>Glycine max</i>)	Gly m 4 (Mol.)
258	Soy (<i>Glycine max</i>)	Gly m 5 (Mol.)
259	Soy (<i>Glycine max</i>)	Gly m 6 (Mol.)
260	Soy (<i>Glycine max</i>)	Gly m 8 (Mol.)
261	Spelt (<i>Triticum spelta</i>)	PEC
262	Squid (<i>Loligo spp.</i>)	PEC
263	Strawberry (<i>Fragaria ananassa</i>)	Fra a 1 + Fra a 3 (Mol.)
264	Sugi (<i>Cryptomeria japonica</i>)	Cry j 1 (Mol.)
265	Sunflower seed (<i>Helianthus annuus</i>)	PEC
266	Swordfish (<i>Xiphias gladius</i>)	Xip g 1 (Mol.)
267	Thornback ray (<i>Raja clavata</i>)	PEC
268	Thornback ray (<i>Raja clavata</i>)	Raj c parvalbumin (Mol.)
269	Timothy (<i>Phleum pratense</i>)	Phl p 1 (Mol.)
270	Timothy (<i>Phleum pratense</i>)	Phl p 2 (Mol.)
271	Timothy (<i>Phleum pratense</i>)	Phl p 5.0101 (Mol.)
272	Timothy (<i>Phleum pratense</i>)	Phl p 6 (Mol.)

Mol.: Molecular Component

PEC: Purified Extract And Characterized

AllerProfile

Complete Allergy Profile	Test Code: ALEX-2
Complete Allergy Profile (With Total IgE)	Test Code: ALEX-2-TE

Sr. No.	Allergen	Category
273	Timothy (<i>Phleum pratense</i>)	Phl p 7 (Mol.)
274	Timothy (<i>Phleum pratense</i>)	Phl p 12 (Mol.)
275	Tomato (<i>Solanum lycopersicum</i>)	PEC
276	Tomato (<i>Solanum lycopersicum</i>)	Sola l 6 (Mol.)
277	Tree of heaven (<i>Ailanthus altissima</i>)	PEC
278	Tuna (<i>Thunnus albacares</i>)	PEC
279	Tuna (<i>Thunnus albacares</i>)	Thu a 1 (Mol.)
280	Turkey (<i>Meleagris gallopavo</i>)	PEC
281	Tyrophagus putrescentiae (<i>Tyrophagus putrescentiae</i>)	PEC
282	Tyrophagus putrescentiae (<i>Tyrophagus putrescentiae</i>)	Tyr p 2 (Mol.)
283	Venus clam (<i>Ruditapes spp.</i>)	PEC
284	Wall pellitory (<i>Parietaria judaica</i>)	PEC
285	Wall pellitory (<i>Parietaria judaica</i>)	Par j 2 (Mol.)
286	Walnut tree pollen (<i>Juglans regia</i>)	PEC
287	Walnut (<i>Juglans regia</i>)	Jug r 1 (Mol.)
288	Walnut (<i>Juglans regia</i>)	Jug r 2 (Mol.)
289	Walnut (<i>Juglans regia</i>)	Jug r 3 (Mol.)
290	Walnut (<i>Juglans regia</i>)	Jug r 4 (Mol.)
291	Walnut (<i>Juglans regia</i>)	Jug r 6 (Mol.)
292	Weeping fig (<i>Ficus benjamina</i>)	PEC
293	Wheat (<i>Triticum aestivum</i>)	Tri a 14 (Mol.)
294	Wheat (<i>Triticum aestivum</i>)	Tri a 19 (Mol.)
295	Wheat (<i>Triticum aestivum</i>)	Tri a aA_TI (Mol.)

Mol.: Molecular Component

PEC: Purified Extract And Characterized

AllerPanel

Indian Paediatric Panel	Test Code: PP-30
-------------------------	------------------

Indian Paediatric Panel (With Total IgE)	Test Code: PP-30-TE
--	---------------------

Sr. No.	Allergen	Category
1	Alpha-Lactalbumin	Bos d 4 (Mol.)
2	<i>Alternaria alternata</i>	PEC
3	Apple	PEC
4	<i>Aspergillus fumigatus</i>	PEC
5	Banana	PEC
6	Bermuda grass pollen	PEC
7	Beta-Lactoglobulin	Bos d 5 (Mol.)
8	Birch pollen	PEC
9	BSA	PEC
10	Cacao (Chocolate)	PEC
11	Carrot	PEC
12	Casein	Bos d 8 (Mol.)
13	Cat epithelia	PEC
14	CCD	CCD
15	Chicken meat	PEC
16	<i>Cladosporium herbarum</i>	PEC
17	Cow's milk	PEC
18	<i>Dermatophagoides farinae</i>	PEC
19	<i>Dermatophagoides pteronyssinus</i>	PEC
20	Dog epithelia	PEC
21	Egg white	PEC
22	Egg yolk	PEC
23	Gluten	PEC
24	Hazelnut	PEC
25	Mugwort pollen	PEC
26	Peanut	PEC
27	Potato	PEC
28	Rice	PEC
29	Soybean	PEC
30	Tuna, yellowfin	PEC

AllerPanel

Indian Atopic Panel 1		Test Code: AP1-30
Indian Atopic Panel 1 (With Total IgE)		Test Code: AP1-30-TE
Sr. No.	Allergen	Category
1	Baker's yeast	PEC
2	Banana	PEC
3	Beef	PEC
4	Bermuda grass pollen	PEC
5	<i>Blomia tropicalis</i>	PEC
6	Cacao (Chocolate)	PEC
7	Cat epithelia	PEC
8	CCD	PEC
9	Chicken	PEC
10	<i>Cladosporium herbarum/ Alternaria alternata</i>	PEC
11	Cockroach (<i>Blatella germanica</i>)	PEC
12	Coconut	PEC
13	Cow's milk	PEC
14	Crab	PEC
15	<i>Dermatophagoides pteronyssinus / Dermatophagoides farinae</i>	PEC
16	Dog epithelia	PEC
17	Egg White / Egg Yolk Mix	PEC
18	Gluten	PEC
19	House dust	PEC
20	Mosquito	PEC
21	Peanut	PEC
22	<i>Penicillium notatum / Aspergillus fumigatus</i>	PEC
23	Potato	PEC
24	Pumpkin	PEC
25	Shrimp	PEC
26	Soybean	PEC
27	Strawberry	PEC
28	Tomato	PEC
29	Tuna, yellowfin	PEC
30	Wheat flour	PEC

AllerPanel

Indian Atopic Panel 2		Test Code: AP2-30
Indian Atopic Panel 2 (With Total IgE)		Test Code: AP2-30-TE
Sr. No.	Allergen	Category
1	Alpha-Lactalbumin	Bos d 4 (Mol.)
2	<i>Alternaria alternata</i>	PEC
3	<i>Aspergillus fumigatus</i>	PEC
4	Beef meat	PEC
5	Beta-Lactoglobulin	Bos d 5 (Mol.)
6	Black fly	PEC
7	<i>Blomia tropicalis</i>	PEC
8	<i>Candida albicans</i>	PEC
9	Casein	Bos d 8 (Mol.)
10	Cat epithelia	PEC
11	CCD	PEC
12	Chicken meat	PEC
13	<i>Cladosporium herbarum</i>	PEC
14	Cockroach (<i>Blatella germanica</i>)	PEC
15	Cow's milk	PEC
16	Crab	PEC
17	<i>Dermatophagoides farinae</i>	PEC
18	<i>Dermatophagoides pteronyssinus</i>	PEC
19	Dog epithelia	PEC
20	Egg white	PEC
21	Egg yolk	PEC
22	House dust	PEC
23	Latex	PEC
24	Mosquito	PEC
25	Peanut	PEC
26	Pork meat	PEC
27	Shrimp mix	PEC
28	Soybean	PEC
29	Total IgE	PEC
30	Wheat flour	PEC

Mol.: Molecular Component

PEC: Purified Extract And Characterized

AllerPanel

Fungal Panel	Test Code: FP-10
Fungal Panel (With Total IgE)	Test Code: FP-10-TE

Sr. No.	Allergen	Category
1	<i>Alternaria alternata</i>	PEC
2	Alt a 1	Mol.
3	Asp f 1	Mol.
4	Asp f 3	Mol.
5	Asp f 4	Mol.
6	Asp f 6	Mol.
7	<i>Aspergillus fumigatus</i>	PEC
8	CCD	CCD
9	<i>Cladosporium herbarum</i>	PEC
10	<i>Penicillium notatum</i>	PEC

AllerPanel

Milk Plus Gluten	Test Code: MG-06
------------------	------------------

Milk Plus Gluten (With Total IgE)	Test Code: MG-06-TE
-----------------------------------	---------------------

Sr. No.	Allergen	Category
1	Alpha-Lactalbumin	Bos d 4 (Mol.)
2	Beta-Lactoglobulin	Bos d 5 (Mol.)
3	BSA	PEC
4	Casein	Bos d 8 (Mol.)
5	Cow's milk	PEC
6	Gluten	PEC

AllerPanel

Insect Venom Panel	Test Code: VP-08
Insect Venom Panel (With Total IgE)	Test Code: VP-08-TE

Sr. No.	Allergen	Category
1	Api m 1	Mol.
2	Api m 10	Mol.
3	Bee venom	PEC
4	CCD	PEC
5	Hornet venom	PEC
6	Ves v 1	Mol.
7	Ves v 5	Mol.
8	Wasp venom	PEC

AllerCluster

Dust Mite Cluster		Test Code: HDM-07
Dust Mite Cluster (With Total IgE)		Test Code: HDM-07-TE
Sr. No.	Allergen	Category
1	CCD	CCD
2	Der p 1	Mol.
3	Der p 2	Mol.
4	Der p 23	Mol.
5	Der p 10	Mol.
6	<i>Dermatophagoides farinae</i>	PEC
7	<i>Dermatophagoides pteronyssinus</i>	PEC

AllerCluster

Drug Allergen Cluster	Test Code: DRG-07
-----------------------	-------------------

Drug Allergen Cluster (With Total IgE)	Test Code: DRG-07-TE
--	----------------------

Sr. No.	Allergen - DRUGS	Category
1	Acetylsalicylic acid	PEC
2	Amoxicillin	PEC
3	Ibuprofen	PEC
4	Paracetamol/Phenacetin	PEC
5	Penicillin G	PEC
6	Penicillin V	PEC
7	Sulfamethoxazol	PEC

Sr. No.	Mixes	Allergen	Test Code
1	Baby Food Mix	Egg white, Cow's milk, Wheat flour, Peanut, Soybean	MIX-01
2	Epithelia Mix	Cat epithelia, Horse epithelia, Cattle epithelia, Dog dander	MIX-02
3	Flour Mix	Wheat flour, Rye flour, Oat flour, Maize flour	MIX-03
4	Food Screening	Whole egg, Wheat flour, Peanut, Hazelnut, King prawn, Codfish, Tomato, Maize flour, Cow's milk	MIX-04
5	Fruits Mix 1	Orange, Apple, Banana, Peach	MIX-05
6	Fruits Mix 2	Lemon, Strawberry, Pineapple, Pear	MIX-06
7	Inhalation Allergens	Mugwort, Birch, Timothy grass, Rye, Cat epithelia, Dog epithelia, <i>Alternaria tenuis</i> , <i>Dermatophagoides pteronyssinus</i> , <i>Dermatophagoides farinae</i>	MIX-07
8	Mites Mix 1	<i>Dermatophagoides pteronyssinus</i> , <i>Dermatophagoides farinae</i> , <i>Acarus siro</i> , <i>Lepidoglyphus destructor</i> , <i>Tyrophagus putrescentiae</i>	MIX-08
9	Mites Mix 2	<i>Dermatophagoides pteronyssinus</i> , <i>Dermatophagoides farinae</i>	MIX-09
10	Mold Mix 1	<i>Alternaria tenuis</i> , <i>Botrytis cinerea</i> , <i>Curvularia lunata</i> , <i>Fusarium moniliforme</i> , <i>Helminthosporium halodes</i> , <i>Cladosporium herbarum</i>	MIX-10
11	Mold Mix 2	<i>Aspergillus fumigatus</i> , <i>Mucor mucedo</i> , <i>Penicillium notatum</i> , <i>Pullularia pullulans</i> , <i>Rhizopus nigricans</i> , <i>Serpula lacrymans</i>	MIX-11
12	Nuts Mix 1	Peanut, Hazelnut, Brazil nut, Almond, Coconut	MIX-12
13	Spices Mix 1	Anise, Curry, Caraway, Garlic	MIX-13
14	Spices Mix 2	Nutmeg, Bell pepper, Pepper, Mustard	MIX-14
15	Vegetables Mix 1	Pea, White bean, Carrot, Potato	MIX-15
16	Vegetables Mix 2	Tomato, Spinach, Cabbage, Bell pepper	MIX-16

Allergen Combination/Mixed Screening (With Total IgE)

Sr. No.	Mixes	Allergen	Test Code
1	Baby Food Mix + TE	Egg white, Cow's milk, Wheat flour, Peanut, Soybean + Total IgE	MIX-01-TE
2	Epithelia Mix + TE	Cat epithelia, Horse epithelia, Cattle epithelia, Dog dander + Total IgE	MIX-02-TE
3	Flour Mix + TE	Wheat flour, Rye flour, Oat flour, Maize flour + Total IgE	MIX-03-TE
4	Food Screening + TE	Whole egg, Wheat flour, Peanut, Hazelnut, King prawn, Codfish, Tomato, Maize flour, Cow's milk + Total IgE	MIX-04-TE
5	Fruits Mix 1 + TE	Orange, Apple, Banana, Peach + Total IgE	MIX-05-TE
6	Fruits Mix 2 + TE	Lemon, Strawberry, Pineapple, Pear + Total IgE	MIX-06-TE
7	Inhalation Allergens + TE	Mugwort, Birch, Timothy grass, Rye, Cat epithelia, Dog epithelia, <i>Alternaria tenuis</i> , <i>Dermatophagoides pteronyssinus</i> , <i>Dermatophagoides farinae</i> + Total IgE	MIX-07-TE
8	Mites Mix 1 + TE	<i>Dermatophagoides pteronyssinus</i> , <i>Dermatophagoides farinae</i> , <i>Acarus siro</i> , <i>Lepidoglyphus destructor</i> , <i>Tyrophagus putrescentiae</i> + Total IgE	MIX-08-TE
9	Mites Mix 2 + TE	<i>Dermatophagoides pteronyssinus</i> , <i>Dermatophagoides farinae</i> + Total IgE	MIX-09-TE
10	Mold Mix 1 + TE	<i>Alternaria tenuis</i> , <i>Botrytis cinerea</i> , <i>Curvularia lunata</i> , <i>Fusarium moniliforme</i> , <i>Helminthosporium halodes</i> , <i>Cladosporium herbarum</i> + Total IgE	MIX-10-TE
11	Mold Mix 2 + TE	<i>Aspergillus fumigatus</i> , <i>Mucor mucedo</i> , <i>Penicillium notatum</i> , <i>Pullularia pullulans</i> , <i>Rhizopus nigricans</i> , <i>Serpula lacrymans</i> + Total IgE	MIX-11-TE
12	Nuts Mix 1 + TE	Peanut, Hazelnut, Brazil nut, Almond, Coconut + Total IgE	MIX-12-TE
13	Spices Mix 1 + TE	Anise, Curry, Caraway, Garlic + Total IgE	MIX-13-TE
14	Spices Mix 2 + TE	Nutmeg, Bell pepper, Pepper, Mustard + Total IgE	MIX-14-TE
15	Vegetables Mix 1 + TE	Pea, White bean, Carrot, Potato + Total IgE	MIX-15-TE
16	Vegetables Mix 2 + TE	Tomato, Spinach, Cabbage, Bell pepper + Total IgE	MIX-16-TE

Individual Allergens

Sr. No.	Allergen - DRUGS	Test Code
1	Acetylsalicylic acid	ALR-001
2	Amoxicillin	ALR-002
3	Ibuprofen	ALR-003
4	Paracetamol/Phenacetin	ALR-004
5	Penicillin G	ALR-005
6	Penicillin V	ALR-006
7	Sulfamethoxazol	ALR-007

Sr. No.	Allergen - MITES	Test Code
8	<i>Acarus siro</i>	ALR-008
9	<i>Dermatophagoides farinae</i>	ALR-009
10	<i>Dermatophagoides microceras</i>	ALR-010
11	<i>Dermatophagoides pteronyssinus</i>	ALR-011
12	<i>Euroglyphus maynei</i>	ALR-012
13	<i>Glycyphagus domesticus</i>	ALR-013
14	<i>Lepidoglyphus destructor</i>	ALR-014
15	<i>Tyrophagus putrescentiae</i>	ALR-015

Sr. No.	Allergen - EPIDERMAL	Test Code
16	Cat Epithelia	ALR-016
17	Dog Dander	ALR-017
18	Dog Epithelia	ALR-018
19	Mouse Epithelia	ALR-019
20	Mouse Urine Protein	ALR-020
21	Pigeon Excrement	ALR-021
22	Pigeon Feathers	ALR-022
23	Rat Epithelia	ALR-023
24	Rat Urine Protein	ALR-024

Individual Allergens

Sr. No.	Allergen - FOOD	Test Code
25	Almond	ALR-025
26	Apple	ALR-026
27	Banana	ALR-027
28	Beef	ALR-028
29	Bell Pepper	ALR-029
30	Black Tea	ALR-030
31	Brown Shrimp	ALR-031
32	Cabbage	ALR-032
33	Cacao	ALR-033
34	Cardamom	ALR-034
35	Carrot	ALR-035
36	Cashew Nut	ALR-036
37	Cauliflower	ALR-037
38	Chicken Meat	ALR-038
39	Chocolate	ALR-039
40	Coconut	ALR-040
41	Coffee	ALR-041
42	Cow's Milk	ALR-042
43	Crab	ALR-043
44	Cucumber	ALR-044
45	Date	ALR-045
46	Egg White	ALR-046
47	Eggplant	ALR-047
48	Garlic	ALR-048
49	Gluten	ALR-049
50	Grapes	ALR-050
51	Green Beans	ALR-051
52	Hazelnut	ALR-052
53	Honey	ALR-053
54	Lemon	ALR-054
55	Lentils	ALR-055
56	Lettuce	ALR-056
57	Lobster	ALR-057
58	Maize	ALR-058
59	Maize Flour	ALR-059
60	Mango	ALR-060
61	Mushroom Champignon	ALR-061
62	Mustard	ALR-062
63	Mutton Meat	ALR-063

Individual Allergens

Sr. No.	Allergen - FOOD	Test Code
64	Onion	ALR-064
65	Orange	ALR-065
66	Papaya	ALR-066
67	Pea	ALR-067
68	Peach	ALR-068
69	Peanut	ALR-069
70	Pistachio	ALR-070
71	Pork	ALR-071
72	Potato	ALR-072
73	Red Beet	ALR-073
74	Rice	ALR-074
75	Sesame Seed	ALR-075
76	Soybean	ALR-076
77	Spinach	ALR-077
78	Strawberry	ALR-078
79	Tomato	ALR-079
80	Walnut	ALR-080
81	Watermelon	ALR-081
82	Wheat Flour	ALR-082
83	Whole Egg	ALR-083
84	Yeast	ALR-084

Individual Allergens

Sr. No.	Allergen - GRASS POLLEN	Test Code
85	Barley	ALR-085
86	Maize	ALR-086
87	Timothy Grass	ALR-087
88	Wheat	ALR-088

Sr. No.	Allergen - TREE POLLEN	Test Code
89	Eucalyptus	ALR-089

Sr. No.	Allergen - WEED POLLEN	Test Code
90	Amaranth	ALR-090
91	<i>Chenopodium album</i>	ALR-091
92	Common Ragweed	ALR-092
93	Mugwort	ALR-093
94	Pellitory	ALR-094

Sr. No.	Allergen - INSECTS	Test Code
95	Bee Venom	ALR-095
96	Cockroach	ALR-096
97	Fire Ant	ALR-097
98	Horsefly	ALR-098
99	Mosquito	ALR-099
100	Pigeon Tick	ALR-100
101	Wasp Venom	ALR-101

Individual Allergens

Sr. No.	Allergen - MOLDS	Test Code
102	<i>Alternaria tenuis</i>	ALR-102
103	<i>Aspergillus fumigatus</i>	ALR-103
104	<i>Aspergillus niger</i>	ALR-104
105	<i>Candida albicans</i>	ALR-105
106	<i>Cladosporium herbarum</i>	ALR-106
107	<i>Curvularia lunata</i>	ALR-107
108	<i>Fusarium culmorum</i>	ALR-108
109	<i>Mucor mucedo</i>	ALR-109
110	<i>Mucor racemosus</i>	ALR-110
111	<i>Penicillium notatum</i>	ALR-111
112	<i>Rhizopus nigricans</i>	ALR-112

Sr. No.	Allergen - SPICES	Test Code
113	Anise	ALR-113
114	Basil	ALR-114
115	Bay Leaf	ALR-115
116	Caraway	ALR-116
117	Cinnamon	ALR-117
118	Coriander	ALR-118
119	Ginger	ALR-119
120	Nutmeg	ALR-120
121	Oregano	ALR-121
122	Pepper	ALR-122
123	Poppy	ALR-123

Individual Allergens

Sr. No.	Allergen - MOLECULAR COMPONENTS	Test Code
124	Alt a 1	ALR-124
125	Der p 1	ALR-125
126	Der p 2	ALR-126
127	Pen a 1	ALR-127

Sr. No.	Allergen - OCCUPATIONAL	Test Code
128	Latex	ALR-129

Sr. No.	Test Name - OTHERS	Test Code
129	CCD Bromelain	ALR-130

Sr. No.	Test Name	Test Code
130	Total IgE	TOT-E

FoodProfile

Food Intolerance

Test Code: FOX

Sr. No.	Allergen	Category
1	Abalone (<i>Haliotis gigantea</i>)	PEC
2	Agar Agar (<i>Agarose, Agaropectin</i>)	PEC
3	Almond (<i>Prunus dulcis</i>)	PEC
4	Almond milk (<i>Prunus dulcis_milk</i>)	PEC
5	Aloe (<i>Aloe vera</i>)	PEC
6	Amaranth (<i>Amaranthus spp.</i>)	PEC
7	Anise (<i>Pimpinella anisum</i>)	PEC
8	Apple (<i>Malus domestica</i>)	PEC
9	Apricot (<i>Prunus armeniaca</i>)	PEC
10	Aronia (<i>Aronia spp.</i>)	PEC
11	Artichoke (<i>Cynara cardunculus subsp. scolymus</i>)	PEC
12	Arugula (<i>Eruca sativa</i>)	PEC
13	Aspergillus niger (<i>Aspergillus niger</i>)	PEC
14	Atlantic cod (<i>Gadus morhua</i>)	PEC
15	Atlantic herring (<i>Clupea harengus</i>)	PEC
16	Atlantic redfish (<i>Sebastes marinus</i>)	PEC
17	Avocado (<i>Persea americana</i>)	PEC
18	Baker's yeast (<i>Saccharomyces cerevisiae</i>)	PEC
19	Bamboo sprouts (<i>Bambusa vulgaris</i>)	PEC
20	Banana (<i>Musa acuminata</i>)	PEC
21	Baobab (<i>Adansonia digitata</i>)	PEC
22	Barley (<i>Hordeum vulgare</i>)	PEC
23	Basil (<i>Ocimum basilicum</i>)	PEC
24	Bay leaf (<i>Laurus nobilis</i>)	PEC
25	Beef (<i>Bos domesticus</i>)	PEC
26	Blackberry (<i>Rubus fruticosus</i>)	PEC
27	Blueberry (<i>Vaccinium myrtillus</i>)	PEC
28	Boar (<i>Sus scrofa</i>)	PEC
29	Boletus (<i>Boletus edulis</i>)	PEC
30	Brazil nut (<i>Bertholletia excelsa</i>)	PEC
31	Brewer's yeast (<i>Saccharomyces uvarum</i>)	PEC
32	Broccoli (<i>Brassica oleracea var. italica</i>)	PEC
33	Brussels sprouts (<i>Brassica oleracea var. gemmifera</i>)	PEC
34	Buckwheat (<i>Fagopyrum esculentum</i>)	PEC
35	Buffalo milk (<i>Bubalus bubalis</i>)	PEC
36	Buttermilk (<i>Bos primigenius f. taurus</i>)	PEC
37	Cabbage (<i>Brassica oleracea var. Capitata</i>)	PEC
38	Camel milk (<i>Camelus dromedarius</i>)	PEC
39	Camembert (<i>Bos domesticus_Ca</i>)	PEC
40	Cane sugar (<i>Saccharum officinarum</i>)	PEC

FoodProfile

Food Intolerance

Test Code: FOX

Sr. No.	Allergen	Category
41	Caper (<i>Capparis spinosa</i>)	PEC
42	Caraway (<i>Carum carvi</i>)	PEC
43	Cardamom (<i>Elettaria cardamomum</i>)	PEC
44	Carp (<i>Cyprinus carpio</i>)	PEC
45	Carrot (<i>Daucus carota</i>)	PEC
46	Cashew (<i>Anacardium occidentale</i>)	PEC
47	Cauliflower (<i>Brassica oleracea var botrytis</i>)	PEC
48	Caviar (<i>Acipenseridae</i>)	PEC
49	Cayenne pepper (<i>Capsicum frutescens</i>)	PEC
50	Celery Bulb (<i>Apium graveolens</i>)	PEC
51	Celery Stalk (<i>Apium graveolens_Stalk</i>)	PEC
52	Chamomile (<i>Matricaria chamomillae</i>)	PEC
53	Chanterelle (<i>Cantharellus cibarius</i>)	PEC
54	Chard (<i>Beta vulgaris spp. vulgaris</i>)	PEC
55	Cherry (<i>Prunus avium</i>)	PEC
56	Chia seed (<i>Salvia hispanica</i>)	PEC
57	Chicken (<i>Gallus domesticus</i>)	PEC
58	Chickpea (<i>Cicer arietinus</i>)	PEC
59	Chicorée (<i>Cichorium intybus var. foliosum</i>)	PEC
60	Chili (red) (<i>Capsicum frutescens</i>)	PEC
61	Chinese cabbage (<i>Brassica rapa spp. pekinensis</i>)	PEC
62	Chives (<i>Allium schoenoprasum</i>)	PEC
63	Chlorella (<i>Chlorella spp.</i>)	PEC
64	Cinnamon (<i>Cinnamomum verum</i>)	PEC
65	Clove (<i>Syzygium aromaticum</i>)	PEC
66	Cockle (<i>Cardiidae spp.</i>)	PEC
67	Cocoa (<i>Theobroma cacao</i>)	PEC
68	Coconut (<i>Cocos nucifera_nut</i>)	PEC
69	Coconut milk (<i>Cocos nucifera_milk</i>)	PEC
70	Coffee (<i>Coffea arabica</i>)	PEC
71	Common mussel (<i>Mytilus edulis</i>)	PEC
72	Coriander (<i>Coriandrum sativum</i>)	PEC
73	Corn (<i>Zea mays</i>)	PEC
74	Cottage cheese (<i>Bos domesticus_Hü</i>)	PEC
75	Cow's milk (<i>Bos domesticus</i>)	PEC
76	Cow's milk (<i>Bos domesticus</i>)	Bos d 4 (MoL.)
77	Cow's milk (<i>Bos domesticus</i>)	Bos d 5 (MoL.)
78	Cow's milk (<i>Bos domesticus</i>)	Bos d 8 (MoL.)
79	Crab (<i>Chionoecetes spp.</i>)	PEC

Mol.: Molecular Component

PEC: Purified Extract And Characterized

FoodProfile

Food Intolerance

Test Code: FOX

Sr. No.	Allergen	Category
80	Cranberry (<i>Vaccinium macrocarpon</i>)	PEC
81	Cucumber (<i>Cucumis sativus</i>)	PEC
82	Cumin (<i>Cuminum cyminum</i>)	PEC
83	Curry (<i>Condimentum spp.</i>)	PEC
84	Dandelion root (<i>Taraxacum vulgare</i>)	PEC
85	Date (<i>Phoenix dactylifera</i>)	PEC
86	Dill (<i>Anethum graveolens</i>)	PEC
87	Duck (<i>Anas platyrhynchos domestica</i>)	PEC
88	Durum (<i>Triticum durum</i>)	PEC
89	Eel (<i>Anguilla anguilla</i>)	PEC
90	Egg white (<i>Gallus domesticus</i>)	PEC
91	Egg yolk (<i>Gallus domesticus</i>)	PEC
92	Eggplant (<i>Solanum melongena</i>)	PEC
93	Einkorn (<i>Triticum monococcum</i>)	PEC
94	Elderberry (<i>Sambucus nigra</i>)	PEC
95	Elderflower (<i>Sambucus nigra</i>)	PEC
96	Emmental (<i>Bos domesticus_Em</i>)	PEC
97	Emmer (<i>Triticum dicoccum</i>)	PEC
98	Endive (<i>Cichorium endivia</i>)	PEC
99	Enoki (<i>Flammulina velutipes</i>)	PEC
100	European anchovy (<i>Engraulis encrasicolus</i>)	PEC
101	European pilchard (<i>Sardina pilchardus</i>)	PEC
102	European plaice (<i>Pleuronectes platessa</i>)	PEC
103	Fennel (bulb) (<i>Foeniculum vulgare var. azoricum</i>)	PEC
104	Fenugreek (<i>Trigonella foenum-graecum</i>)	PEC
105	Fig (<i>Ficus carica</i>)	PEC
106	French horn mushroom (<i>Pleurotus eryngii</i>)	PEC
107	Garlic (<i>Allium sativum</i>)	PEC
108	Gilt-head bream (<i>Sparus aurata</i>)	PEC
109	Ginger (<i>Zingiber officinale</i>)	PEC
110	Ginkgo (<i>Ginkgo biloba</i>)	PEC
111	Ginseng (<i>Panax ginseng</i>)	PEC
112	Gluten (<i>Triticum aestivum</i>)	PEC
113	Goat epithelia (<i>Capra hircus</i>)	PEC
114	Goat cheese (<i>Capra hircus_cheese</i>)	PEC
115	Goat milk (<i>Capra hircus</i>)	PEC
116	Gooseberry (<i>Ribes grossularia</i>)	PEC
117	Gouda (<i>Bos domesticus_Go</i>)	PEC
118	Grape (<i>Vitis vinifera</i>)	PEC

FoodProfile

Food Intolerance

Test Code: FOX

Sr. No.	Allergen	Category
119	Grapefruit (<i>Citrus paradisi</i>)	PEC
120	Greater burdock root (<i>Arctium lappa</i>)	PEC
121	Green bean (<i>Phaseolus vulgaris</i>)	PEC
122	Green cabbage (<i>Brassica oleracea var. sabellica</i>)	PEC
123	Guarana (<i>Paullinia cupana</i>)	PEC
124	Haddock (<i>Melanogrammus aeglefinus</i>)	PEC
125	Hake (<i>Merluccius capensis</i>)	PEC
126	Hazelnut (<i>Corylus avellana</i>)	PEC
127	Hempseed (<i>Cannabis sativa</i>)	PEC
128	Hibiscus (<i>Hibiscus sabdariffa</i>)	PEC
129	Honey (<i>Apis mellifera</i>)	PEC
130	Hops (<i>Humulus lupulus</i>)	PEC
131	Horse (<i>Equus caballus</i>)	PEC
132	Horseradish (<i>Armoracia rusticana</i>)	PEC
133	House cricket (<i>Acheta domesticus</i>)	PEC
134	Jasmine (<i>Jasminum officinale</i>)	PEC
135	Juniper berry (<i>Juniperus communis</i>)	PEC
136	Kiwano (<i>Cucumis metuliferus</i>)	PEC
137	Kiwi (<i>Actinidia deliciosa</i>)	PEC
138	Kohlrabi (<i>Brassica oleracea var. gongylodes</i>)	PEC
139	Kola nut (<i>Cola</i>)	PEC
140	Lamb (<i>Ovis aries</i>)	PEC
141	Lamb's lettuce (<i>Valerianella locusta</i>)	PEC
142	Leek (<i>Allium porrum</i>)	PEC
143	Lemon (<i>Citrus limon</i>)	PEC
144	Lemongrass (<i>Cymbopogon citratus</i>)	PEC
145	Lentil (<i>Lens culinaris</i>)	PEC
146	Lime (<i>Citrus aurantifolia</i>)	PEC
147	Linseed (<i>Linum usitatissimum</i>)	PEC
148	Lobster (<i>Homarus gammarus</i>)	PEC
149	Lupine seed (<i>Lupinus albus</i>)	PEC
150	Lychee (<i>Litchi chinesis</i>)	PEC
151	Maca root (<i>Lepidium meyenii</i>)	PEC
152	Macadamia (<i>Macadamia integrifolia</i>)	PEC
153	Mackerel (<i>Scomber scombrus</i>)	PEC
154	Marjoram (<i>Origanum majorana</i>)	PEC
155	Malt (barley) (<i>Hordeum vulgare</i>)	PEC
156	Mango (<i>Mangifera indica</i>)	PEC
157	Mealworm (<i>Tenebrio molitor</i>)	PEC

FoodProfile

Food Intolerance

Test Code: FOX

Sr. No.	Allergen	Category
158	Melon (<i>Cucumis melo</i>)	PEC
159	Migratory locust (<i>Locusta migratoria</i>)	PEC
160	Millet (<i>Panicum miliaceum</i>)	PEC
161	Mint (<i>Nepeta catania</i>)	PEC
162	Monkfish (<i>Lophius piscatoris</i>)	PEC
163	Moringa (<i>Moringa Oleifera</i>)	PEC
164	Mozzarella (<i>Bos domesticus_Mo</i>)	PEC
165	M-Transglutaminase, meat glue (<i>Streptomyces moboransis</i>)	PEC
166	Mulberry (<i>Morus spp.</i>)	PEC
167	Mung bean (<i>Vigna radiata</i>)	PEC
168	Mustard (<i>Sinapis alba</i>)	PEC
169	Nectarine (<i>Prunus persica var. nucipersica</i>)	PEC
170	Nettle leaves (<i>Urtica dioica</i>)	PEC
171	Noble crayfish (<i>Astacus astacus</i>)	PEC
172	Nori (<i>Pyropia yezoensis_Pyropia tenera</i>)	PEC
173	Northern pike (<i>Esox lucius</i>)	PEC
174	Northern prawn (<i>Pandalus borealis</i>)	PEC
175	Nutmeg (<i>Myristica fragans</i>)	PEC
176	Oat (<i>Avena sativa</i>)	PEC
177	Octopus (<i>Octopus vulgaris</i>)	PEC
178	Olive (<i>Olea europaea</i>)	PEC
179	Onion (<i>Allium cepa</i>)	PEC
180	Orange (<i>Citrus sinensis</i>)	PEC
181	Oregano (<i>Origanum vulgare</i>)	PEC
182	Ostrich (<i>Struthio camelus</i>)	PEC
183	Oyster (<i>Ostrea edulis</i>)	PEC
184	Oyster mushroom (<i>Pleurotus ostreatus</i>)	PEC
185	Papaya (<i>Carica papaya</i>)	PEC
186	Paprika (<i>Capsicum annum</i>)	PEC
187	Parmesan (<i>Bos domesticus_Pa</i>)	PEC
188	Parsley (<i>Petroselinum crispum</i>)	PEC
189	Parsnip (<i>Pastinaca sativa</i>)	PEC
190	Passion fruit (<i>Passiflora edulis</i>)	PEC
191	Pea (<i>Pisum sativum</i>)	PEC
192	Peach (<i>Prunus persica</i>)	PEC
193	Peanut (<i>Arachis hypogea</i>)	PEC
194	Pear (<i>Pyrus communis</i>)	PEC
195	Pecan nut (<i>Carya illinoensis</i>)	PEC
196	Pepper - black/white/green/red/yellow (<i>Piper nigrum</i>)	PEC

FoodProfile

Food Intolerance

Test Code: FOX

Sr. No.	Allergen	Category
197	Peppermint (<i>Mentha piperitat</i>)	PEC
198	Physalis (<i>Physalis peruviana</i>)	PEC
199	Pine nut (<i>Pinus koreanis</i>)	PEC
200	Pineapple (<i>Ananaso comosus</i>)	PEC
201	Pistachio (<i>Pistacia vera</i>)	PEC
202	Plum (<i>Prunus domestica</i>)	PEC
203	Pok-Choi (<i>Brassica rapa spp. chinensis</i>)	PEC
204	Polish wheat (<i>Triticum polonicum</i>)	PEC
205	Pomegranate (<i>Punica granatum</i>)	PEC
206	Poppy seed (<i>Papaver somniferum</i>)	PEC
207	Pork (<i>Sus domesticus</i>)	PEC
208	Potato (<i>Solanum tuberosum</i>)	PEC
209	Pumpkin butternut (<i>Cucurbita maxima</i>)	PEC
210	Pumpkin hokkaido (<i>Cucurbita maxima</i>)	PEC
211	Pumpkin seed (<i>Cucurbita pepo</i>)	PEC
212	Quail egg (<i>Coturnix coturnix</i>)	PEC
213	Quinoa (<i>Chenopodium quinoa</i>)	PEC
214	Rabbit (<i>Oryctolagus spp.</i>)	PEC
215	Radicchio (<i>Cichorium intybus var. foliosum</i>)	PEC
216	Radish (<i>Raphanus sativus v. sativus</i>)	PEC
217	Raisin (<i>Vitis vinifera</i>)	PEC
218	Rapeseed (<i>Brassica napus</i>)	PEC
219	Raspberry (<i>Rubus idaeus</i>)	PEC
220	Razor shell (<i>Pharidae spp.</i>)	PEC
221	Red beet (<i>Beta vulgaris subsp. vulgaris</i>)	PEC
222	Red cabbage (<i>Brassica oleracea capitata</i>)	PEC
223	Red currant (<i>Ribes rubrum</i>)	PEC
224	Rice (<i>Oryza sativa</i>)	PEC
225	Romanesco (<i>Brassica oleracea</i>)	PEC
226	Rosemary (<i>Rosmarinus officinalis</i>)	PEC
227	Rye (<i>Secale cereale</i>)	PEC
228	Safflower oil (<i>Carthamus tinctorius</i>)	PEC
229	Sage (<i>Salvia officinalis</i>)	PEC
230	Salmon (<i>Salmo salar</i>)	PEC
231	Savoy (<i>Brassica oleracea convar. capitata var. sabauda</i>)	PEC
232	Scallop (<i>Pecten spp.</i>)	PEC
233	Sepia (<i>Sepiida spp.</i>)	PEC
234	Sesame (<i>Sesamum indicum</i>)	PEC
235	Shallot (<i>Allium ascalonicum</i>)	PEC

FoodProfile

Food Intolerance

Test Code: FOX

Sr. No.	Allergen	Category
236	Sheep cheese (<i>Ovis aries_Cheese</i>)	PEC
237	Sheep milk (<i>Ovis aries</i>)	PEC
238	Shrimp mix (<i>L. setiferus, F. aztecus, F.dourarum</i>)	PEC
239	Sole (<i>Solea solea</i>)	PEC
240	Soy (<i>Glycine max</i>)	PEC
241	Spelt (<i>Triticum spelta</i>)	PEC
242	Spinach (<i>Spinacia oleracea</i>)	PEC
243	Spirulina (<i>Spirullina spp.</i>)	PEC
244	Squid (<i>Loligo spp.</i>)	PEC
245	Stag (<i>Cervus elaphus</i>)	PEC
246	Strawberry (<i>Fragaria ananassa</i>)	PEC
247	Sugar pea (<i>Pisum sativum subsp. sativum convar. axiphium</i>)	PEC
248	Sunflower (<i>Helianthus annuus</i>)	PEC
249	Sweet chestnut (<i>Castanea sativa</i>)	PEC
250	Sweet potato (<i>Ipomoea batatas</i>)	PEC
251	Swordfish (<i>Xiphias gladius</i>)	PEC
252	Tamarind (<i>Tamarindus indica</i>)	PEC
253	Tangerine (<i>Citrus reticulata</i>)	PEC
254	Tapioca (<i>Manihot esculenta</i>)	PEC
255	Tarragon (<i>Artemisia dracunculus</i>)	PEC
256	Tea, black (<i>Amellia assamica</i>)	PEC
257	Tea, green (<i>Camellia sinen</i>)	PEC
258	Thornback ray (<i>Raja clavata</i>)	PEC
259	Thyme (<i>Thymus vulgaris</i>)	PEC
260	Tigernut (<i>Cyperus esculentus</i>)	PEC
261	Tomato (<i>Solanum lycopersicum</i>)	PEC
262	Trout (<i>Oncorhynchus mykiss</i>)	PEC
263	Tuna (<i>Thunnus albacares</i>)	PEC
264	Turbot (<i>Scophtalmus maximus</i>)	PEC
265	Turkey (<i>Meleagris gallopavo</i>)	PEC
266	Turmeric (<i>Curcuma longa</i>)	PEC
267	Turnip (<i>Brassica rapa subsp. rapa</i>)	PEC
268	Vanilla (<i>Vanilla planifolia</i>)	PEC
269	Veal (<i>Bos domesticus</i>)	PEC
270	Venison (<i>Capreolus capreolus</i>)	PEC
271	Venus clam (<i>Ruditapes spp.</i>)	PEC
272	Wakame (<i>Undaria pinnatifida</i>)	PEC
273	Walnut (<i>Juglans regia</i>)	PEC
274	Watercress (<i>Lepidium sativum</i>)	PEC

FoodProfile

Food Intolerance

Test Code: FOX

Sr. No.	Allergen	Category
275	Watermelon (<i>Citrullus lanatus</i>)	PEC
276	Wheat (<i>Triticum aestivum</i>)	PEC
277	Wheat bran (<i>Triticum aestivum</i>)	PEC
278	Wheat gliadin (<i>Triticum aestivum</i>)	Mol.
279	Wheatgrass (<i>Triticum aestivum_G</i>)	PEC
280	White asparagus (<i>Asparagus officinalis</i>)	PEC
281	White bean (<i>Phaseolus vulgaris</i>)	PEC
282	White cabbage (<i>Brassica oleracea var. capitata</i>)	PEC
283	White mushroom (<i>Agaricus bisporus</i>)	PEC
284	Wild garlic (<i>Allium ursinum</i>)	PEC
285	Yacón root (<i>Smallanthus sonchifolius</i>)	PEC
286	Zucchini (<i>Cucurbita pepo</i>)	PEC

Cross-reactive Carbohydrate Determinant Marker Included

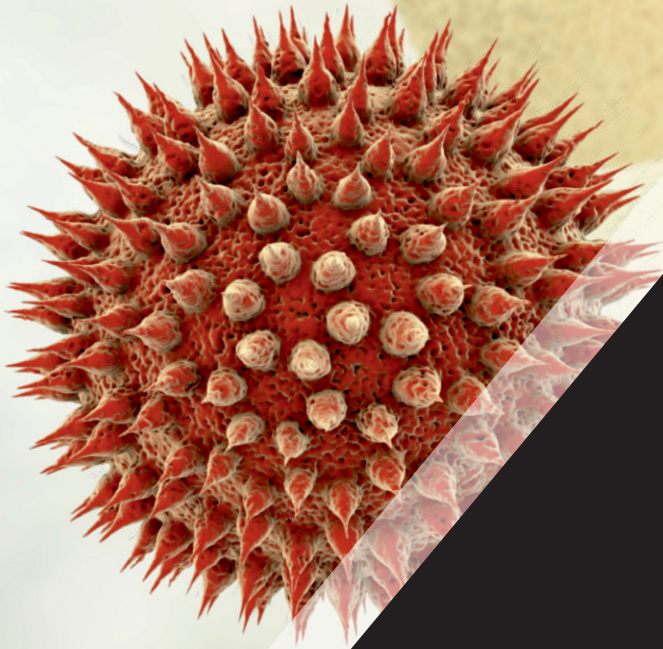


- Phlebotomy Network
- Sample Transportation
- Reduced TAT

- Improved Performance Standards
- State-of-the-art Testing Laboratory
- Purified Local Allergens
- No Crude Extracts
- Reliable Reports







POLESTAR CLINICAL LABORATORIES

601 / 605 Chesterton, Wood Street,
Hiranandani Estate, Thane West, Maharashtra - 400 607, India.
Phone: +91 22 414 98585
Email: contact@polestarlabs.in
Website: www.polestarlabs.in